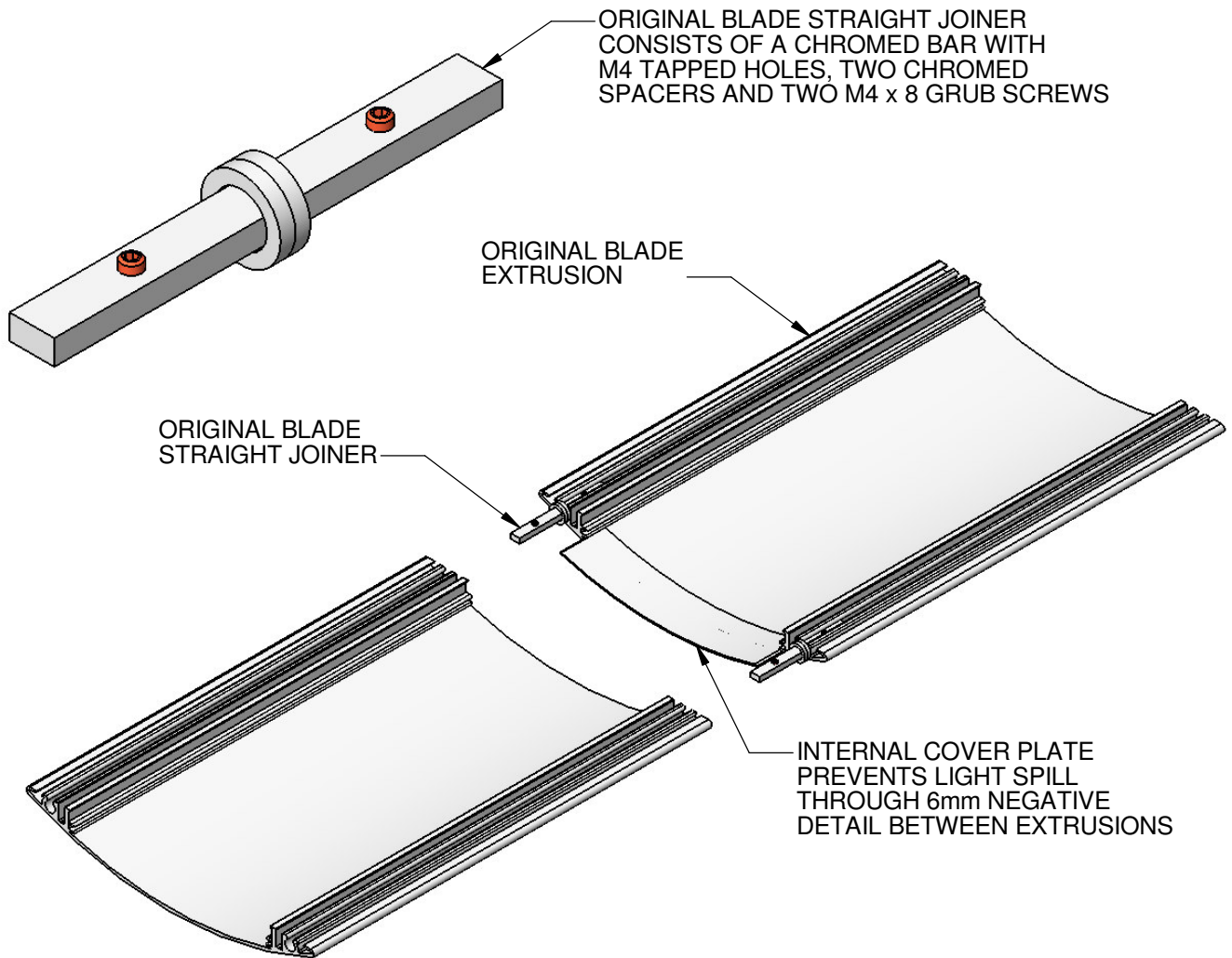
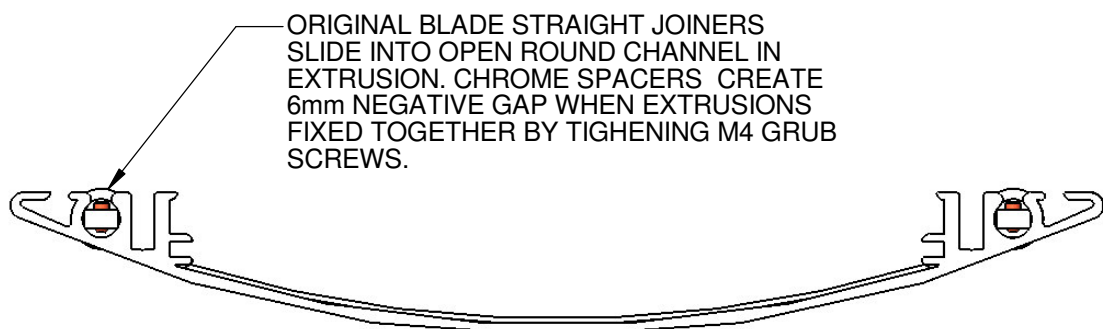


Straight Joiner Installation Instruction

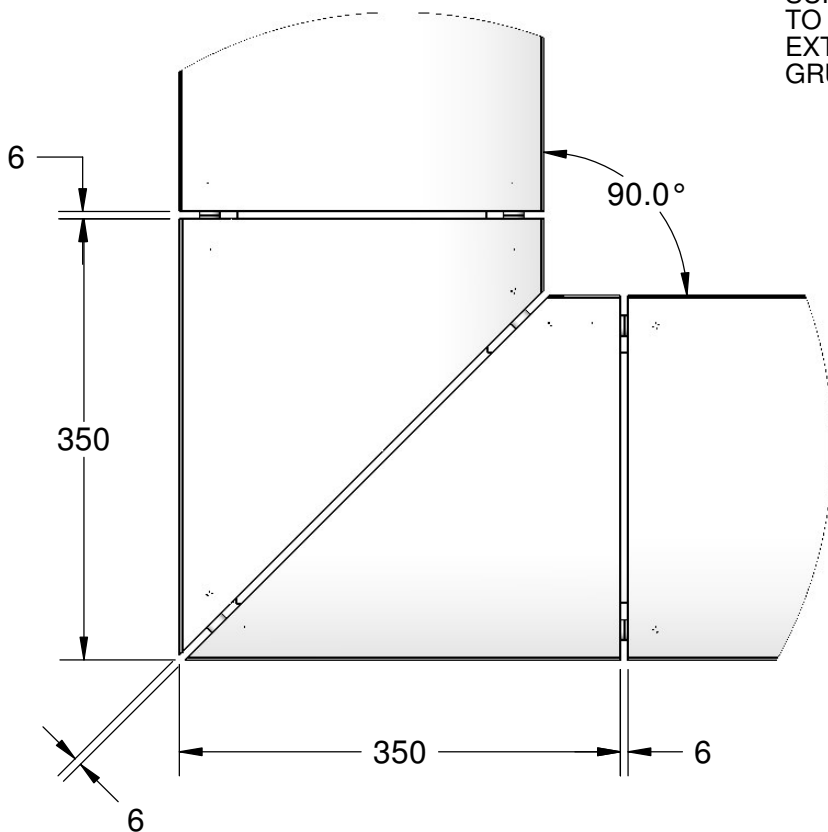
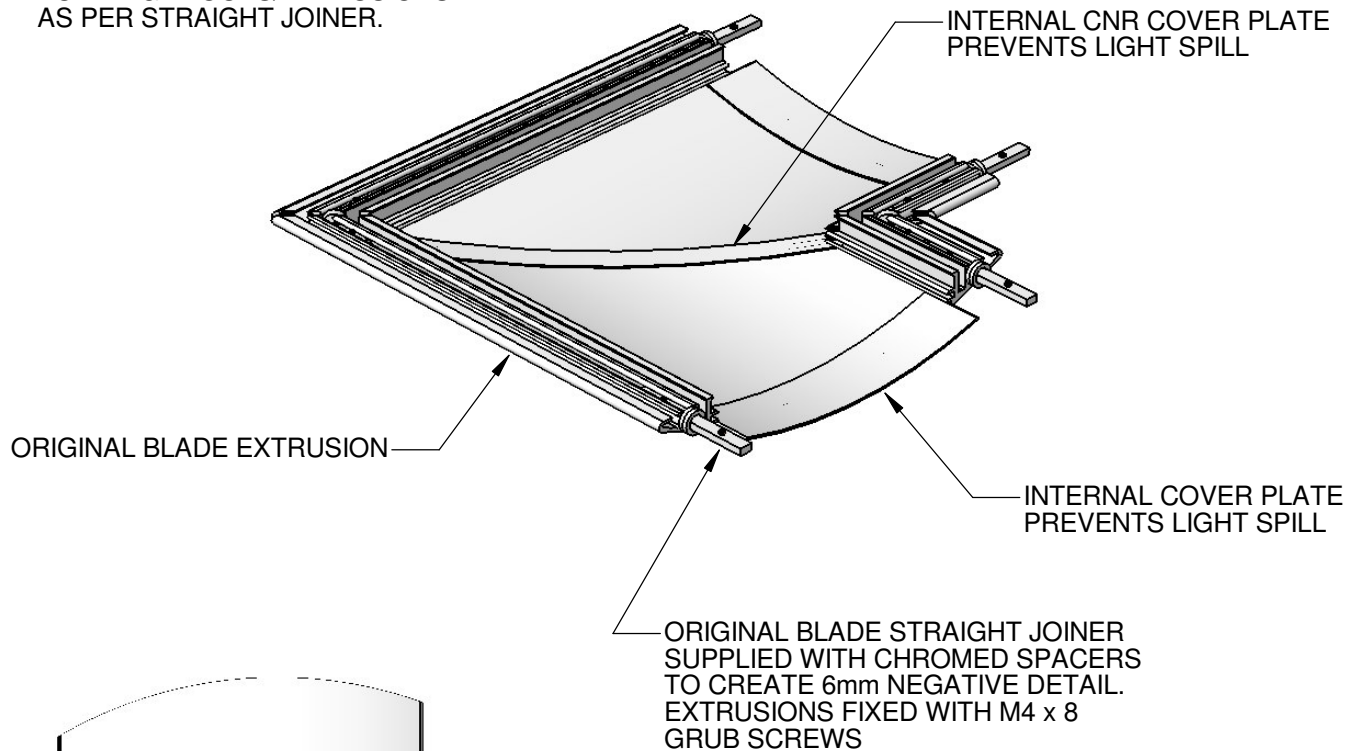


NOTE: ENSURE THERE IS A SUSPENSION
CLOSE TO ANY JOIN TO REDUCE THE
LEVERAGE/LOAD ON THE JOIN.



90° Bend Installation Instruction

90° BEND BUILT IN FACTORY.
FIX TO OTHER ORIGINAL BLADE
BUILDING BLOCKS/EXTRUSIONS
AS PER STRAIGHT JOINER.



REFER TO ORIGINAL BLADE
STRAIGHT JOINER INSTALLATION
INSTRUCTION FOR FURTHER
DETAILS.