

Razor Blade Building Blocks

NOTES

- » The building blocks are made up of the extrusion, gear tray and lamps to the dimensions listed
- » The building blocks can be configured end to end and lighting types are interchangeable
- » The maximum extrusion length is 3600 mm (lengths can be joined, see 'Components' on pages 92–93)
- » Customised configurations available upon request
- » Most systems are dimmable upon request - please specify Switch Dim, DSI, DALI or 1-10 v
- » Building block dimensions do not include endcaps. An endcap is 7 mm (see 'Components' on pages 92–93)
- » Daylight sensors & corridor functions are available
- » Every Blade job is manufactured to order. Production drawings will be issued for sign-off on ordering
- » Installation instructions are available for download on www.bladelighting.com

SURFACE FINISHES

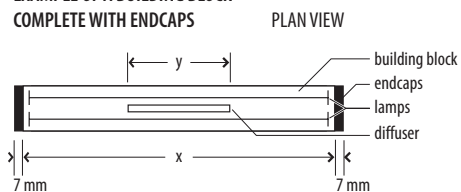
- » Anodised
 - » Powder coated silver
 - » Powder coated white
- * Other finishes are available on request

FLUORESCENT UPLIGHT / DOWNLIGHT WITH FLEXILUME DIFFUSER



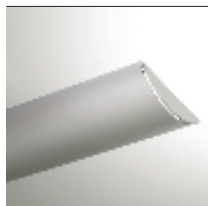
(x) overall length of building block (does not include endcap)	Wattage of T5 fluorescent lamps	(y) Length of diffuser (centred on lamp unit)
1200 mm	2 x 28w or 2 x 54w	385 mm x 39 mm
1500 mm	2 x 35w or 2 x 80w	545 mm x 39 mm

EXAMPLE OF A BUILDING BLOCK COMPLETE WITH ENDCAPS



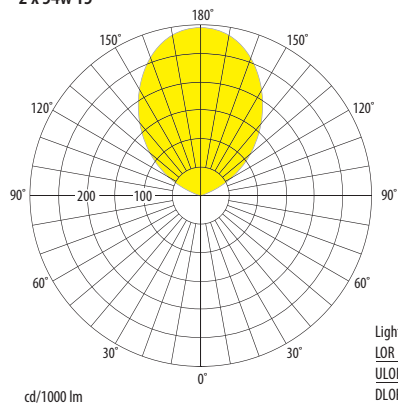
- » Unless specified, colour temperature of lamps will be 4000 K

FLUORESCENT UPLIGHT

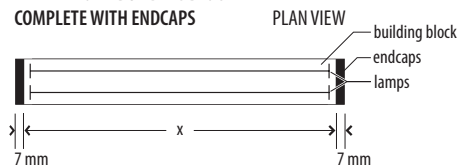


(x) overall length of building block (does not include endcap)	Wattage of T5 fluorescent lamps
1200 mm	2 x 28w or 2 x 54w
1500 mm	2 x 35w or 2 x 80w

2 x 54w T5

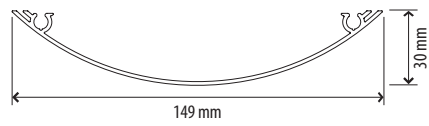


EXAMPLE OF A BUILDING BLOCK COMPLETE WITH ENDCAPS



- » Unless specified, colour temperature of lamps will be 4000 K
- » Photometric data is available for download on www.bladelighting.com





FLUORESCENT UPLIGHT WITH MR11 HALOGEN DOWNLIGHT OR JAC SPOTLIGHT



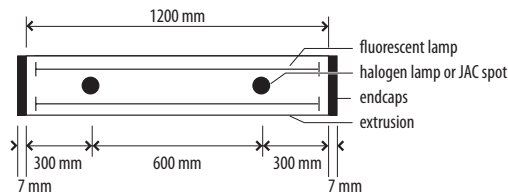
1200 mm BUILDING BLOCK

UPLIGHT: 2 x 28w or 2 x 54w T5	DOWNLIGHT: 2 x 12v 35w MR11 36°
--------------------------------	---------------------------------

UPLIGHT: 2 x 28w or 2 x 54w T5	JAC SPOTS: various options available
--------------------------------	--------------------------------------



EXAMPLE OF A 1200 mm BUILDING BLOCK COMPLETE WITH ENDCAPS PLAN VIEW



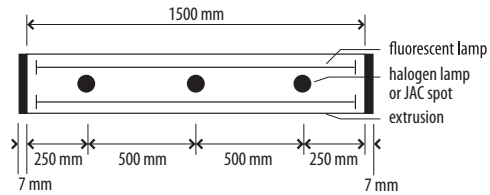
» Fluorescent uplight and downlights/spotlights are wired as two circuits

1500 mm BUILDING BLOCK

UPLIGHT: 2 x 35w or 2 x 80w T5	DOWNLIGHT: 3 x 12v 35w MR11 36°
--------------------------------	---------------------------------

UPLIGHT: 2 x 35w or 2 x 80w T5	JAC SPOTS: various options available
--------------------------------	--------------------------------------

EXAMPLE OF A 1500 mm BUILDING BLOCK COMPLETE WITH ENDCAPS PLAN VIEW



» Fluorescent uplight and downlights/spotlights are wired as two circuits