

Sector Blade Building Blocks

NOTES

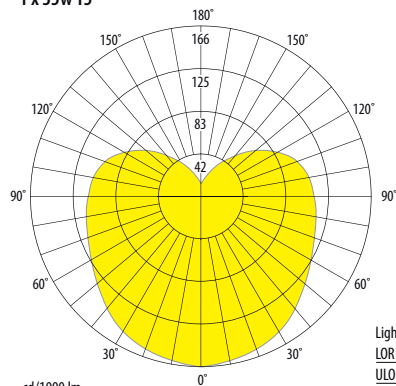
- » The building blocks are made up of the extrusion, gear tray and lamps to the dimensions listed
- » The building blocks can be configured end to end and lighting types are interchangeable
- » The maximum extrusion length is 3600 mm (lengths can be joined, see 'Components' on pages 10–11)
- » Customised configurations available upon request
- » Most systems are dimmable upon request - please specify Switch Dim, DSI, DALI or 1-10 v
- » Building block dimensions do not include endcaps. An endcap is 4 mm (see 'Components' on pages 10–11)
- » Daylight sensors & corridor functions are available
- » Every Blade job is manufactured to order. Production drawings will be issued for sign-off on ordering
- » Installation instructions are available for download on www.bladelighting.com

SURFACE FINISHES

- » Powder coated textured white
- » Powder coated textured silver
- * Other finishes are available on request

PHOTOMETRIC DATA

1 x 35w T5



Light output ratio	
LOR	90.7
ULOR	28.0
DLOR	62.7

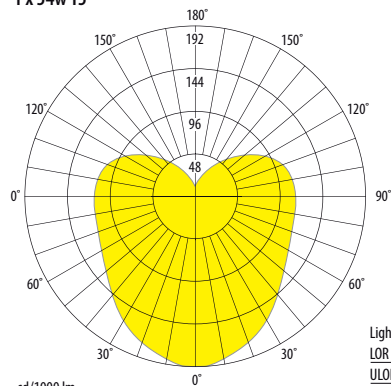
cd/1000 lm

Utilisation Factors

Room Reflectance			Room Index								
Ceiling	Walls	Floor	0.75	1.00	1.25	1.50	2.00	2.50	3.00	4.00	5.00
70	50	20	n/a	0.50	0.56	0.60	0.66	0.70	0.73	0.78	0.81

SHR Nom = 1.75 SHR Max = 1.79

1 x 54w T5



Light output ratio	
LOR	93.7
ULOR	28.7
DLOR	65.1

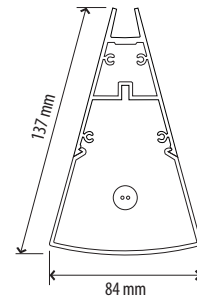
cd/1000 lm

Utilisation Factors

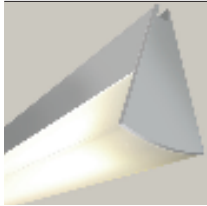
Room Reflectance			Room Index								
Ceiling	Walls	Floor	0.75	1.00	1.25	1.50	2.00	2.50	3.00	4.00	5.00
70	50	20	0.45	0.52	0.58	0.62	0.68	0.73	0.76	0.80	0.83

SHR Nom = 1.50 SHR Max = 1.69

» Photometric data is available for download on www.bladelighting.com

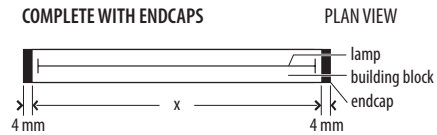


SINGLE SECTOR BLADE



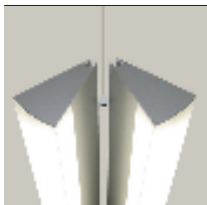
(x) overall length of building block (does not include endcap)	Wattage of T5 fluorescent lamps
580 mm	1 x 14w or 1 x 24w
880 mm	1 x 21w or 1 x 39w
1180 mm	1 x 28w or 1 x 54w
1480 mm	1 x 35w or 1 x 80w

EXAMPLE OF A BUILDING BLOCK COMPLETE WITH ENDCAPS



» Unless specified, colour temperature of lamps will be 4000 K

DOUBLE SECTOR BLADE



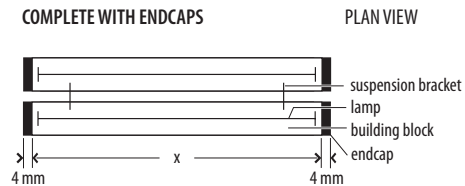
75° BRACKET



120° BRACKET

(x) overall length of building block (does not include endcap)	Wattage of T5 fluorescent lamps
580 mm	2 x 14w or 2 x 24w
880 mm	2 x 21w or 2 x 39w
1180 mm	2 x 28w or 2 x 54w
1480 mm	2 x 35w or 2 x 80w

EXAMPLE OF A BUILDING BLOCK COMPLETE WITH ENDCAPS



» Unless specified, colour temperature of lamps will be 4000 K

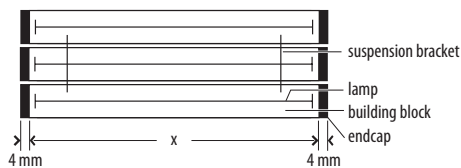
TRIPLE SECTOR BLADE



(x) overall length of building block (does not include endcap)	Wattage of T5 fluorescent lamps
580 mm	3 x 14w or 3 x 24w
880 mm	3 x 21w or 3 x 39w
1180 mm	3 x 28w or 3 x 54w
1480 mm	3 x 35w or 3 x 80w

» Unless specified, colour temperature of lamps will be 4000 K

EXAMPLE OF A BUILDING BLOCK COMPLETE WITH ENDCAPS PLAN VIEW



SECTOR BLADE CHANDELIER



(x) overall length of building block (does not include endcap)	Wattage of T5 fluorescent lamps
580 mm	3 x 14w or 3 x 24w
880 mm	3 x 21w or 3 x 39w
1180 mm	3 x 28w or 3 x 54w
1480 mm	3 x 35w or 3 x 80w

» Unless specified, colour temperature of lamps will be 4000 K

EXAMPLE OF A BUILDING BLOCK COMPLETE WITH ENDCAPS PLAN VIEW

