

Slot Blade Building Blocks

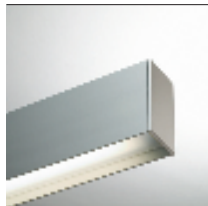
NOTES

- » The building blocks are made up of the extrusion, gear tray and lamps to the dimensions listed
- » The building blocks can be configured end to end and lighting types are interchangeable
- » The maximum extrusion length is 3600 mm (lengths can be joined, see `Components` on pages 38–40)
- » Customised configurations available upon request
- » Most systems are dimmable upon request - please specify Switch Dim, DSI, DALI or 1-10 v
- » Building block dimensions do not include endcaps (see `Components` on pages 38–40)
- » Daylight sensors & corridor functions are available
- » Every Blade job is manufactured to order. Production drawings will be issued for sign-off on ordering
- » Installation instructions are available for download on www.bladelighting.com

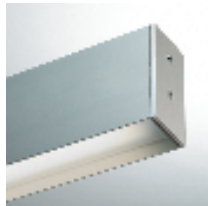
SURFACE FINISHES

- » Anodised
 - » Powder coated silver
 - » Powder coated white
- * Other finishes are available on request

FLUORESCENT



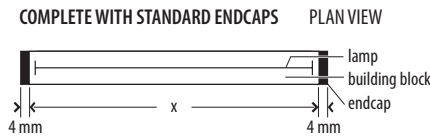
STANDARD



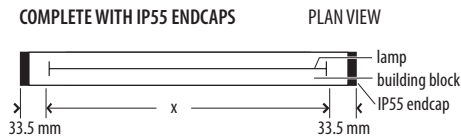
IP55

(x) overall length of building block (does not include endcap)	Wattage of T5 fluorescent lamps
580 mm	1 x 14w or 1 x 24w
880 mm	1 x 21w or 1 x 39w
1180 mm	1 x 28w or 1 x 54w
1480 mm	1 x 35w or 1 x 80w

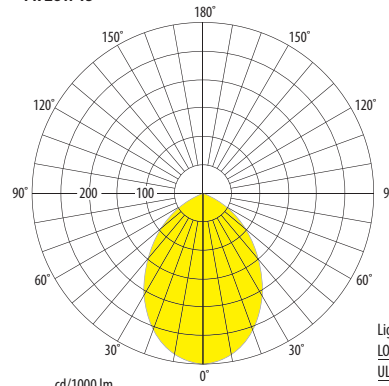
EXAMPLE OF A BUILDING BLOCK COMPLETE WITH STANDARD ENDCAPS



EXAMPLE OF A BUILDING BLOCK COMPLETE WITH IP55 ENDCAPS



1 x 28w T5



Light output ratio

LOR	62.7
ULOR	0
DLOR	62.7

Utilisation Factors

Room Reflectance

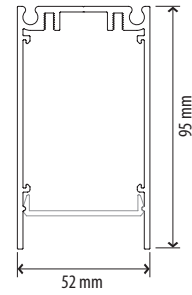
Ceiling	Walls	Floor
70	50	20

Room Index

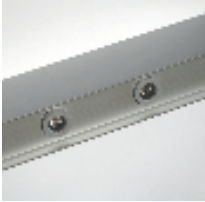
0.75	1.00	1.25	1.50	2.00	2.50	3.00	4.00	5.00
0.40	0.46	0.50	0.53	0.57	0.60	0.62	0.64	0.66

SHR Nom = 1.25 SHR Max = 1.42

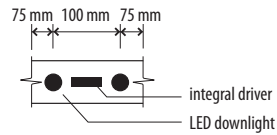
- » Supplied complete with ice diffuser
- » Unless specified, colour temperature of lamps will be 4000 K
- » IP55 Slot Blade is recommended for interior applications only. The maximum length for an IP55 fitting is 3600 mm
- » Photometric data is available for download on www.bladelighting.com



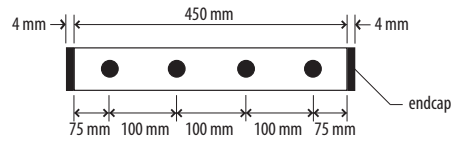
LED DOWNLIGHT



MINIMUM SPACE REQUIREMENT
The minimum space requirement for twin LED Downlights is 250 mm

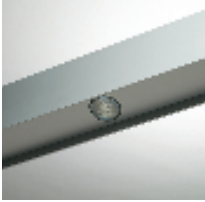


EXAMPLE OF A BUILDING BLOCK COMPLETE WITH ENDCAPS
4 x LED Downlights
PLAN VIEW

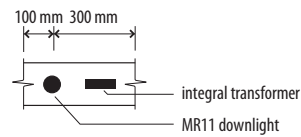


- » With minimum space requirements in mind, an LED downlight can be spaced according to your requirements
- » Unless specified, 1w LED lamp will be supplied in cool white

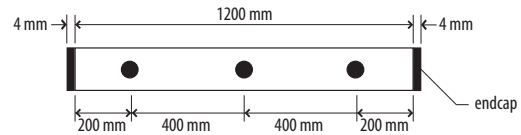
MR11 HALOGEN DOWNLIGHT



MINIMUM SPACE REQUIREMENT
The minimum space requirement for an aluminium back MR11 Downlight is 400 mm



EXAMPLE OF A BUILDING BLOCK COMPLETE WITH ENDCAPS
3 x MR11 Downlights
PLAN VIEW

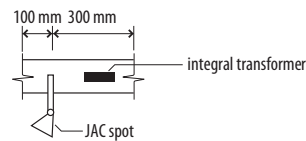


- » With minimum space requirements in mind, an MR11 downlight can be spaced according to your requirements
- » Unless specified, MR11 lamp will be 35w 36°

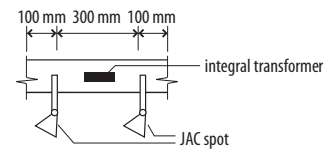
JAC SPOTLIGHT



MINIMUM SPACE REQUIREMENT – 1 x JAC SPOT
The minimum space requirement for a JAC spotlight is 400 mm

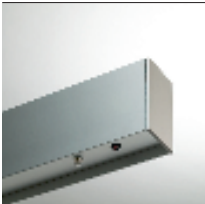


MINIMUM SPACE REQUIREMENT – 2 x JAC SPOTS
The minimum space requirement for 2 x JAC spotlights is 500 mm

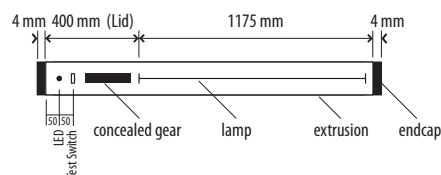


- » Various spotlights and halogen lamp options are available
- » With minimum space requirements in mind, a JAC spotlight can be spaced according to your requirements

EMERGENCY



EXAMPLE OF A 28W T5 EMERGENCY BUILDING BLOCK COMPLETE WITH ENDCAPS
PLAN VIEW



- » The emergency fitting is complete with:
1 x T5 lamp, LED indicator and integral gear
- » Please specify lamp wattage
- » Allow for 1 dedicated circuit to run emergency
- » Emergency options not available as IP55